



HARROW SCHOOL  
ENTERPRISES LTD

EDUCATION | EVENTS | SPORTS | LOCATIONS



CHURCHILL DINING HALL



WEDDINGS | RECEPTIONS | PARTIES | DINNERS | PERFORMANCES | CORPORATE EVENTS





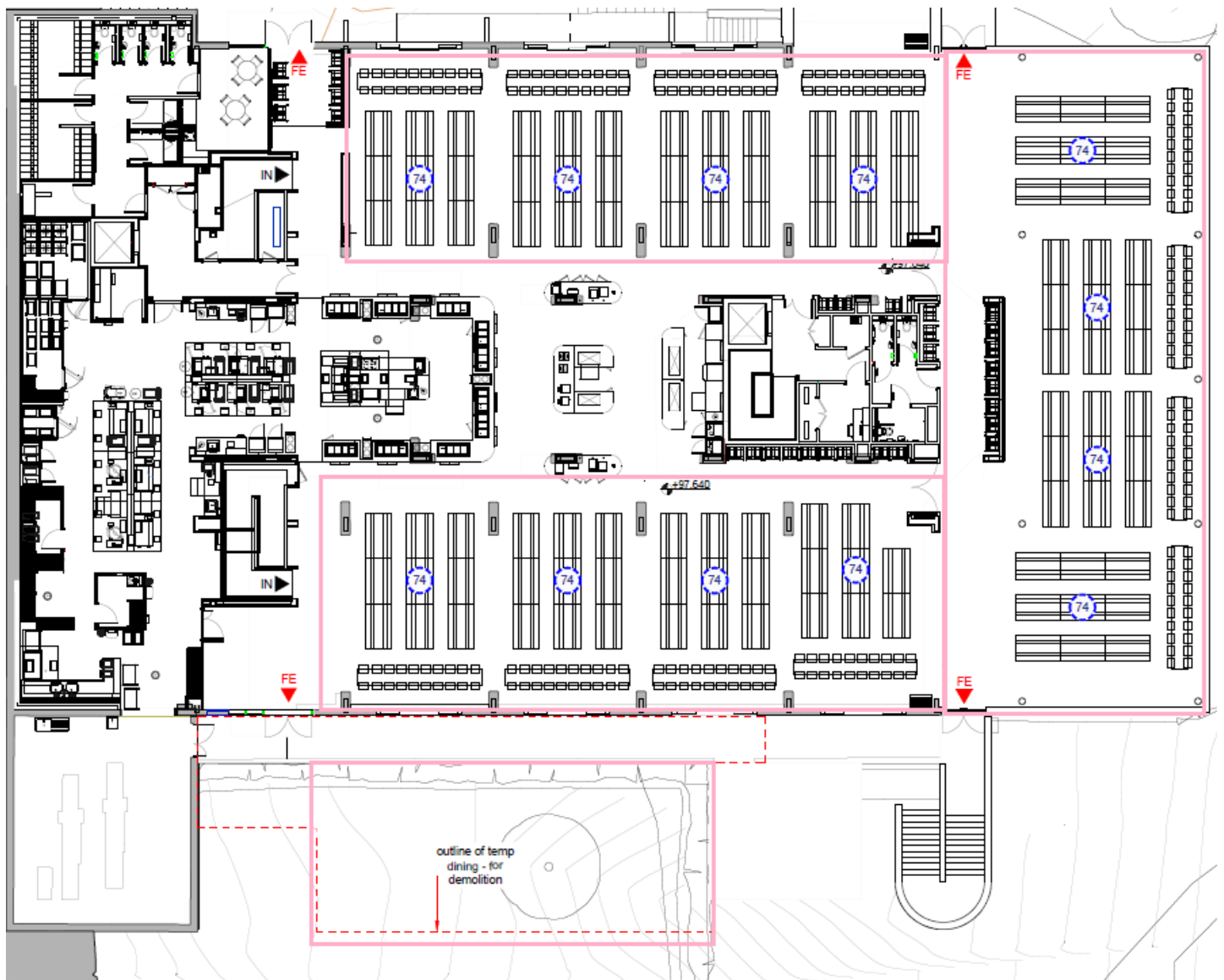
## CHURCHILL DINING HALL

The Churchill Hall is our largest dining venue within our portfolio. The Churchill Hall is located downstairs from the Churchill Room & Terrace. Both venues offer a modern and versatile backdrop to your event. Following its renovation in 2024 the venue benefits from one of the best views of central London and our own Harrow School golf course. The modern venue provides guests with wonderful access from the High Street and our large car park located on Garlands Lane. The venue is suitable for civil licences, post wedding receptions, wedding breakfasts, parties and more.

## EXISTING FURNITURE & ROOM LAYOUT

The Churchill Dining Hall can seat a maximum of 888. The next page shows the capacity for each when choosing your dining options with us. These can be set in a variety of ways. The venue also includes built-in surround sound, microphone capabilities, sound desk and projector screen.

*\*Please be aware all floor plans and capacities are subject to change following the official completion of renovations.*



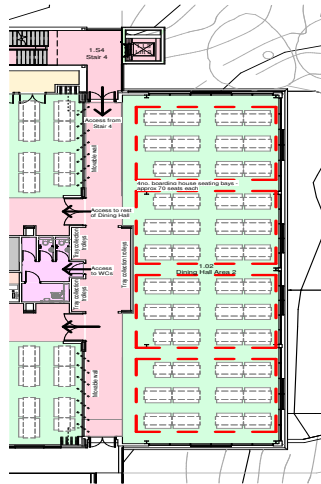
## CHURCHILL DINING HALL - CAPACITIES AND FURNITURE

The Churchill Dining Hall is a huge space with capacity for large scale dining. The capacity changes when suppliers and bespoke furniture is brought into the space. The below table outlines what is possible when choosing your venue formations.

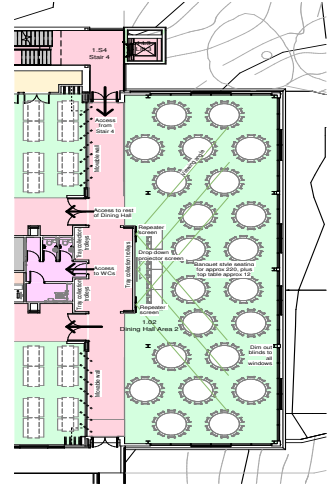
### Capacities

Churchill Dining Hall	Capacity
Full Venue Use (Existing Furniture) *restricted view	550
Extension only (Existing Furniture)	280
Extension only (Round Tables)	220
Full Venue (Round Tables) *restricted View	450

### Existing Furniture



### Hired Furniture



*\*Please be aware all floor plans and capacities are subject to change following the official completion of renovations.*



## CATERING

Harrow School provides an exciting variety of catering options for your event. Menus can be found on our website. Please speak to a member of the events team for menu suggestions and prices for your next event.

### EXTERNAL CATERING

We do permit external caterers in our venues, they can be found on our 'Approved Suppliers List'. We do not permit anyone from outside of the list to cater within our venues.

## FURNITURE HIRE

### Hired Round Tables and Banqueting Chairs

The Churchill Hall can be re arranged to accommodate round dining tables and hired banqueting chairs. This service incurs additional charges. The charges are worked out on an event-by-event basis depending on the request. Please speak to a member of the events team for more information. Please note, we do not permit clients to provide their own furniture companies.

